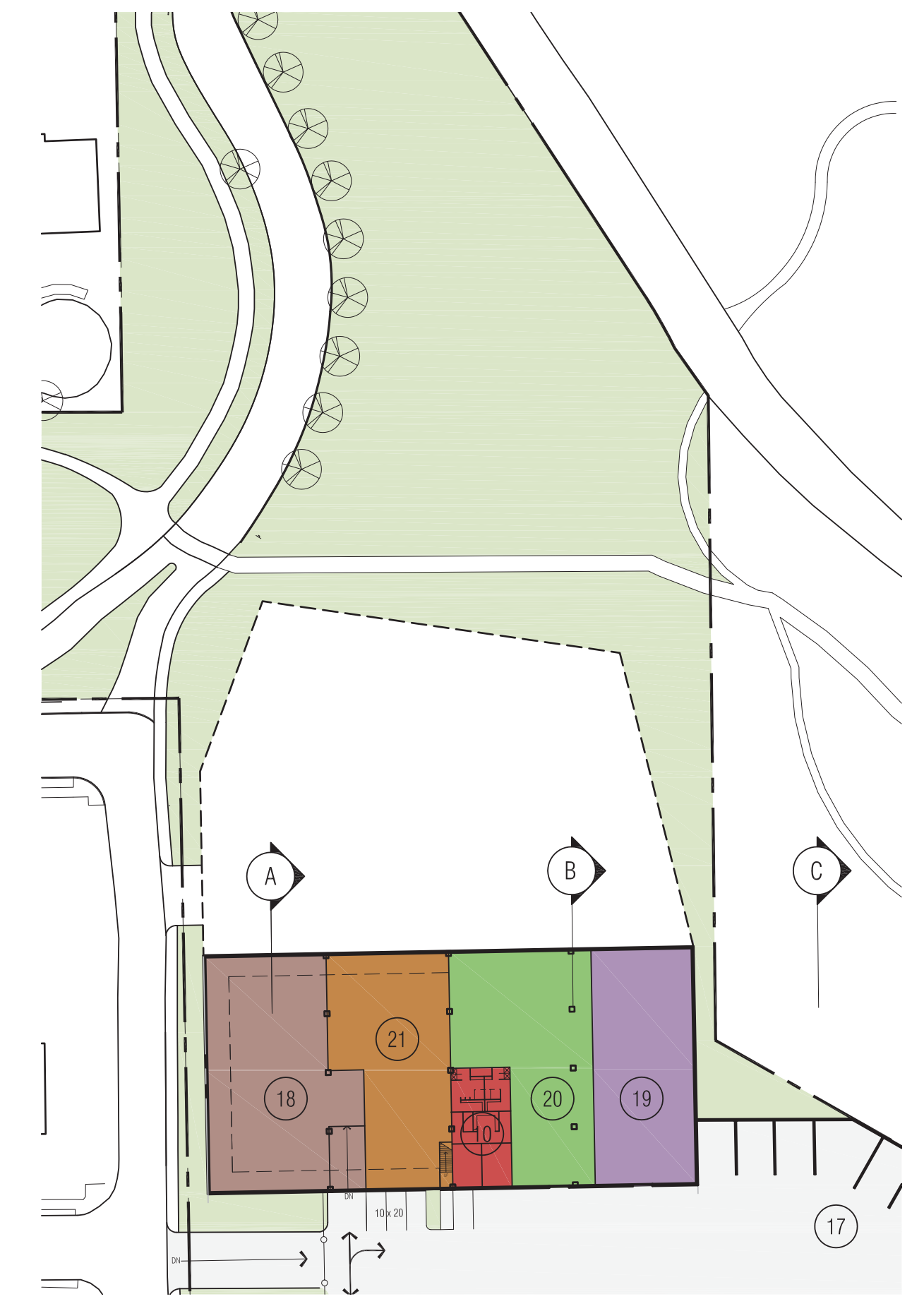


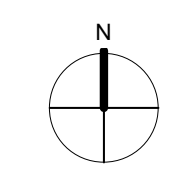
**KEY**

- |                                     |                                  |
|-------------------------------------|----------------------------------|
| ① ADMINISTRATION                    | ⑳ CITY NATURE                    |
| ② PARKING                           | ㉑ PUBLIC WORKS                   |
| ③ MECHANICAL / STORAGE              | ㉒ BINS / WORK AREA               |
| ④ WASH                              | ㉓ MACHINE SHOP                   |
| ⑤ FUEL                              | ㉔ COMMUNITY GARDEN               |
| ⑥ FLEET                             | ㉕ TURF STORAGE                   |
| ⑦ GREEN HOUSE                       | ㉖ TURF SHOP                      |
| ⑧ CONSTRUCTION                      | ㉗ IRRIGATION                     |
| ⑨ PAINT                             | ㉘ AQUATIC PROGRAM                |
| ⑩ CREW                              | ㉙ PESTICIDE / FERTILIZER STORAGE |
| ⑪ ELECTRICAL                        | ㉚ RECYCLING                      |
| ⑫ MECHANICAL                        | ㉛ TRANSIT STOP                   |
| ⑬ FACILITIES MAINTENANCE TECHNICIAN | ㉜ GREAT MEADOW                   |
| ⑭ FENCING SHOP                      | ㉝ PARK SHELTER                   |
| ⑮ WELDING                           | ㉞ CONTAINER STORAGE              |
| ⑯ TRASH                             | ㉟ HEAD HOUSE / COTTAGE           |
| ⑰ MATERIAL BINS                     | ㊱ IN-GROUND NURSERY              |
| ⑱ STORES                            | ㊲ IMPLEMENT STORAGE              |
|                                     | ㊳ PARK ENTRANCE                  |

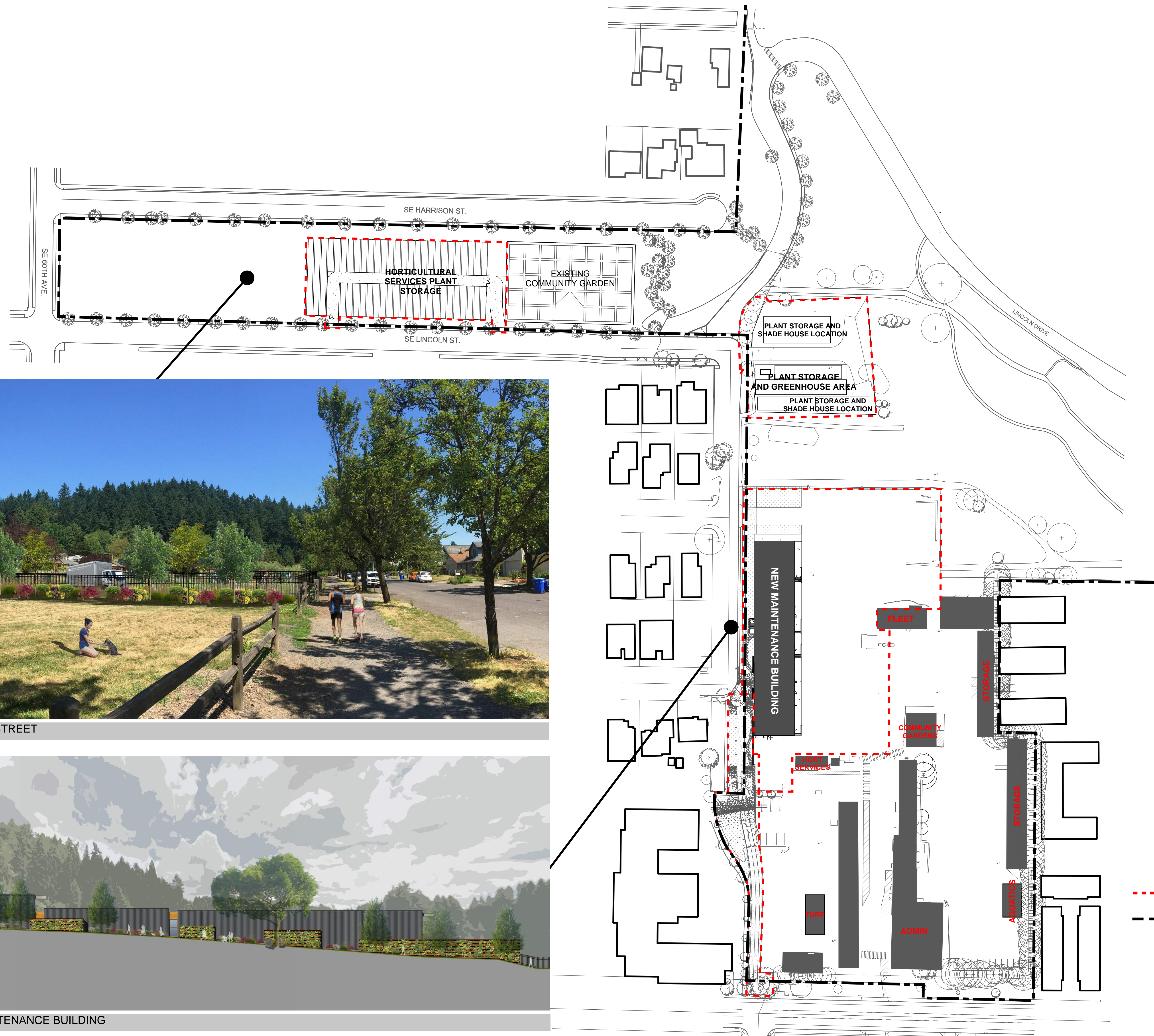
- OUT INDOOR
- LANDSCAPE
  - COMMUNITY GARDENS (SHOP)
  - EQUIPMENT
  - FACILITIES MAINTENANCE
  - CITY NATURE
  - AQUATIC PROGRAM
  - IRRIGATION / TURF
  - ADMINISTRATION
  - SHARED SPACE
  - STORES
  - FLEET MAINTENANCE



LOWER LEVEL PLAN - UPPER NURSERY



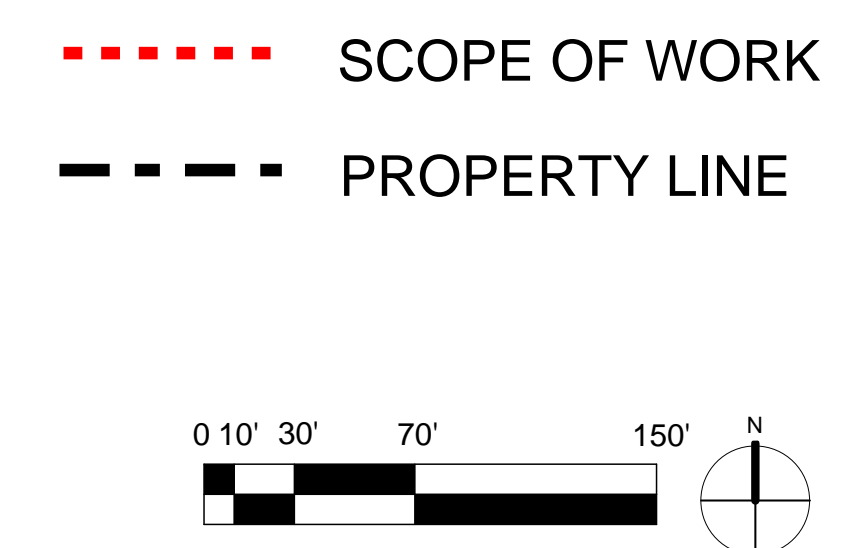




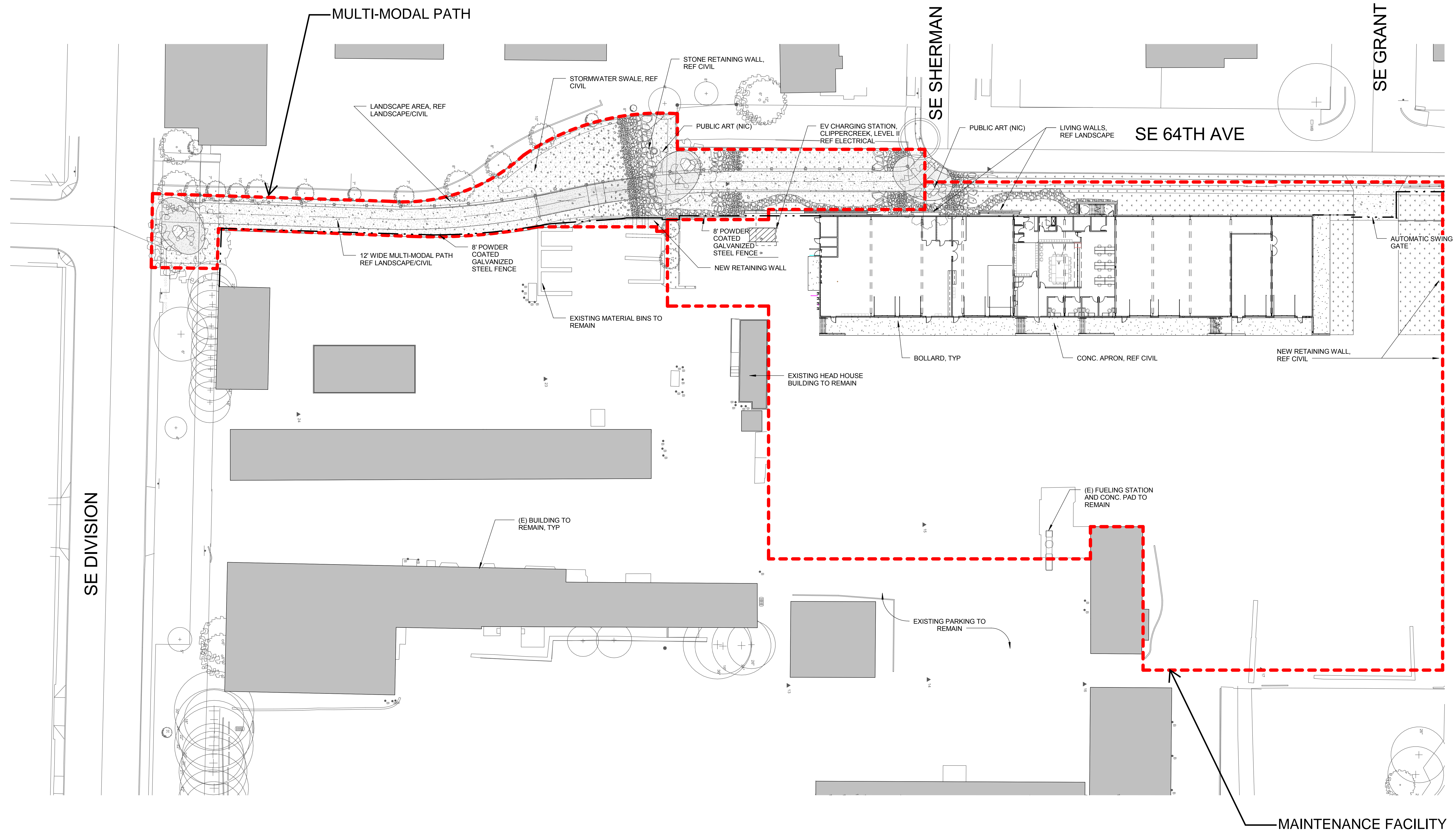
RENDERING - LOOKING EAST FROM LINCOLN STREET



RENDERING - WEST ELEVATION OF NEW MAINTENANCE BUILDING



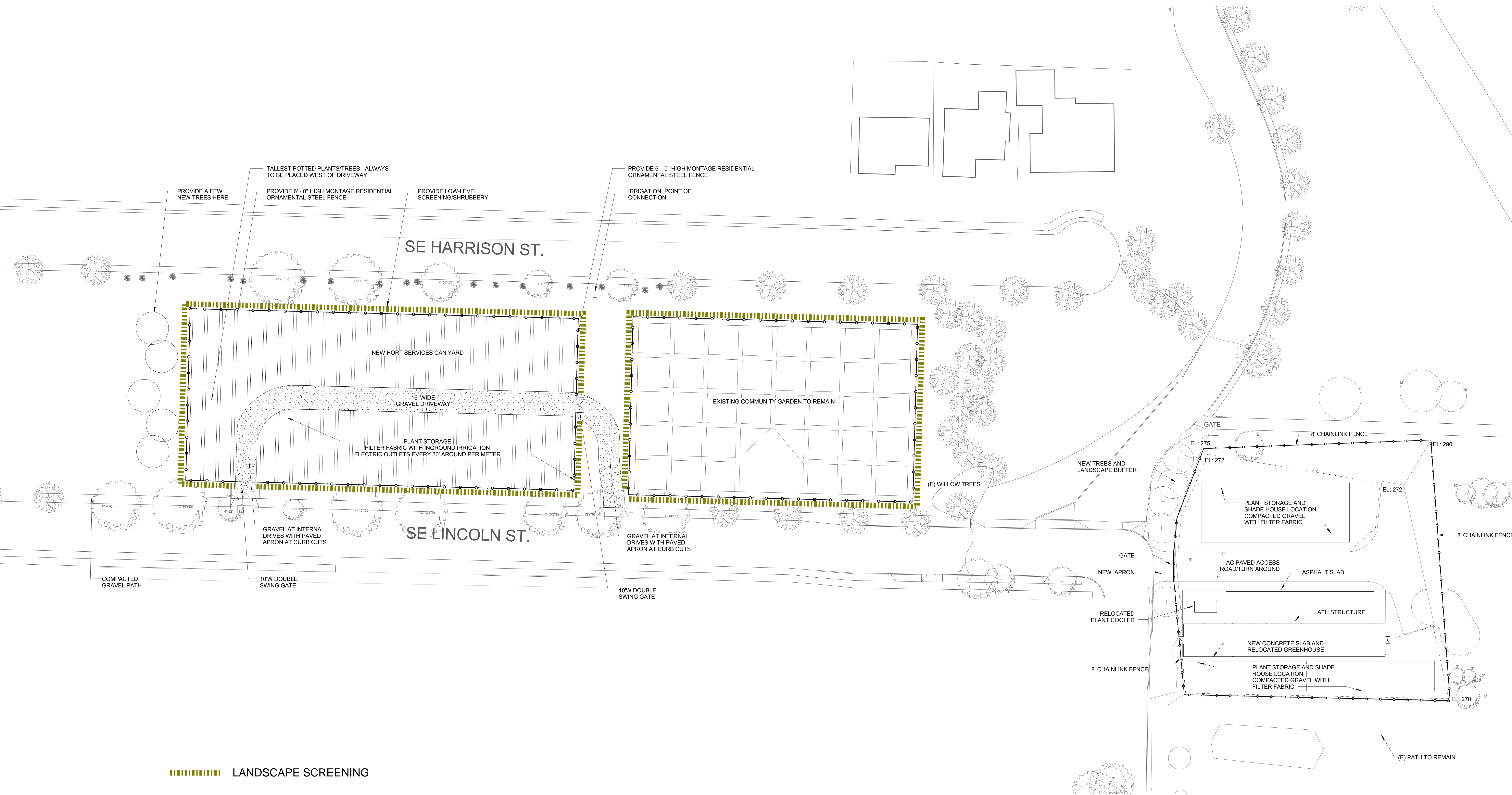




MAINTENANCE YARD SITE PLAN

MT TABOR MAINTENANCE BUILDING



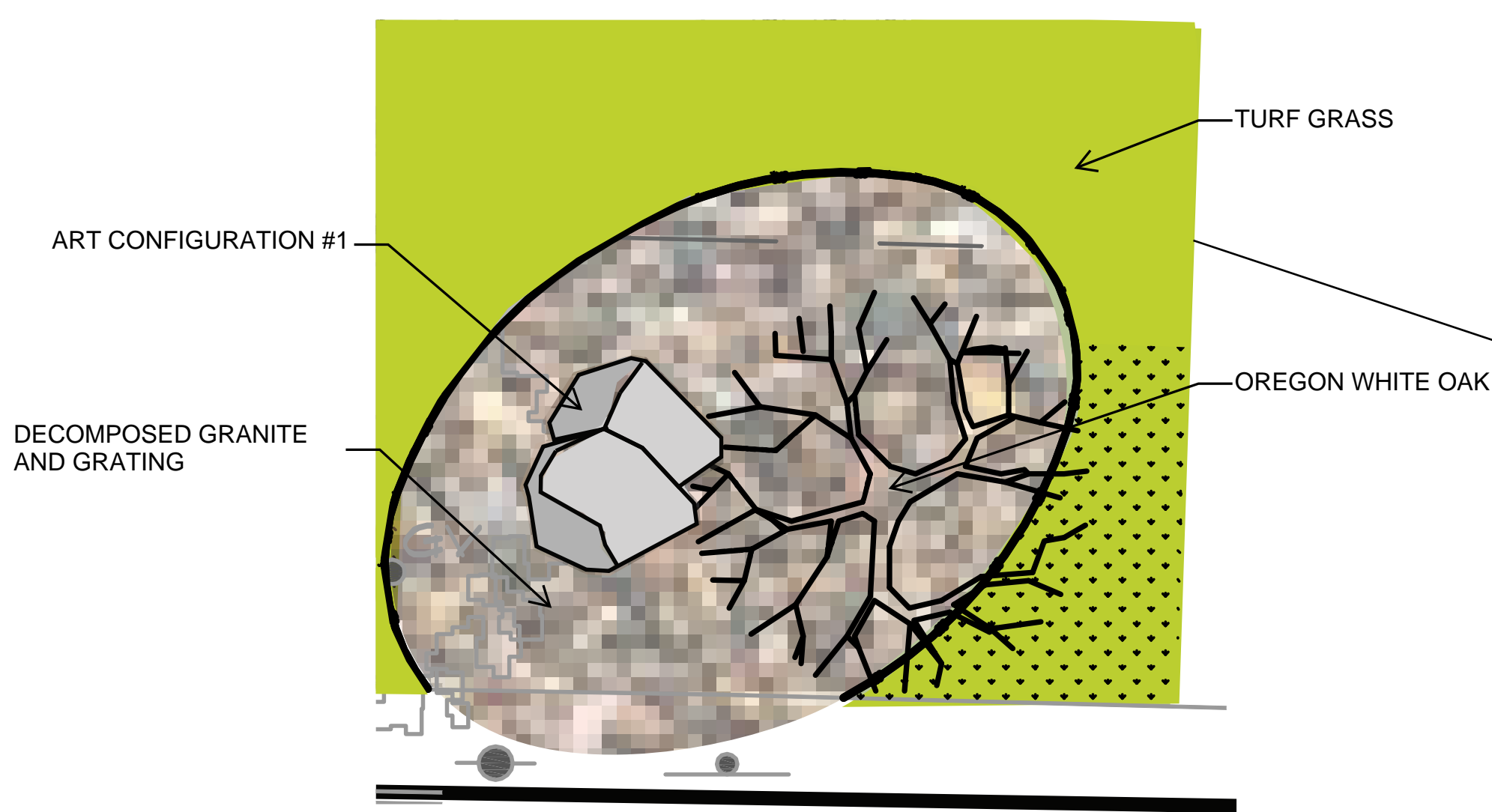
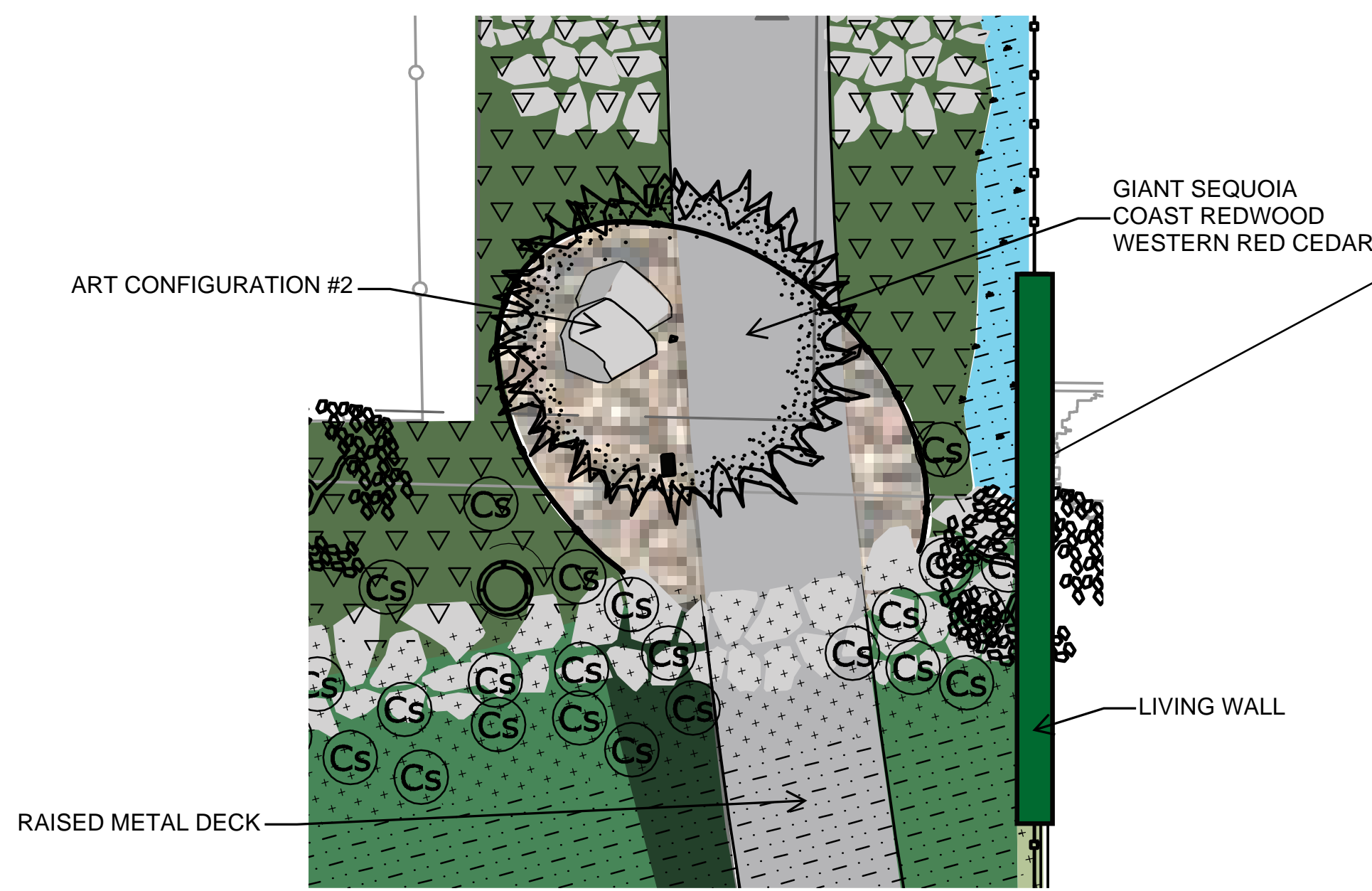
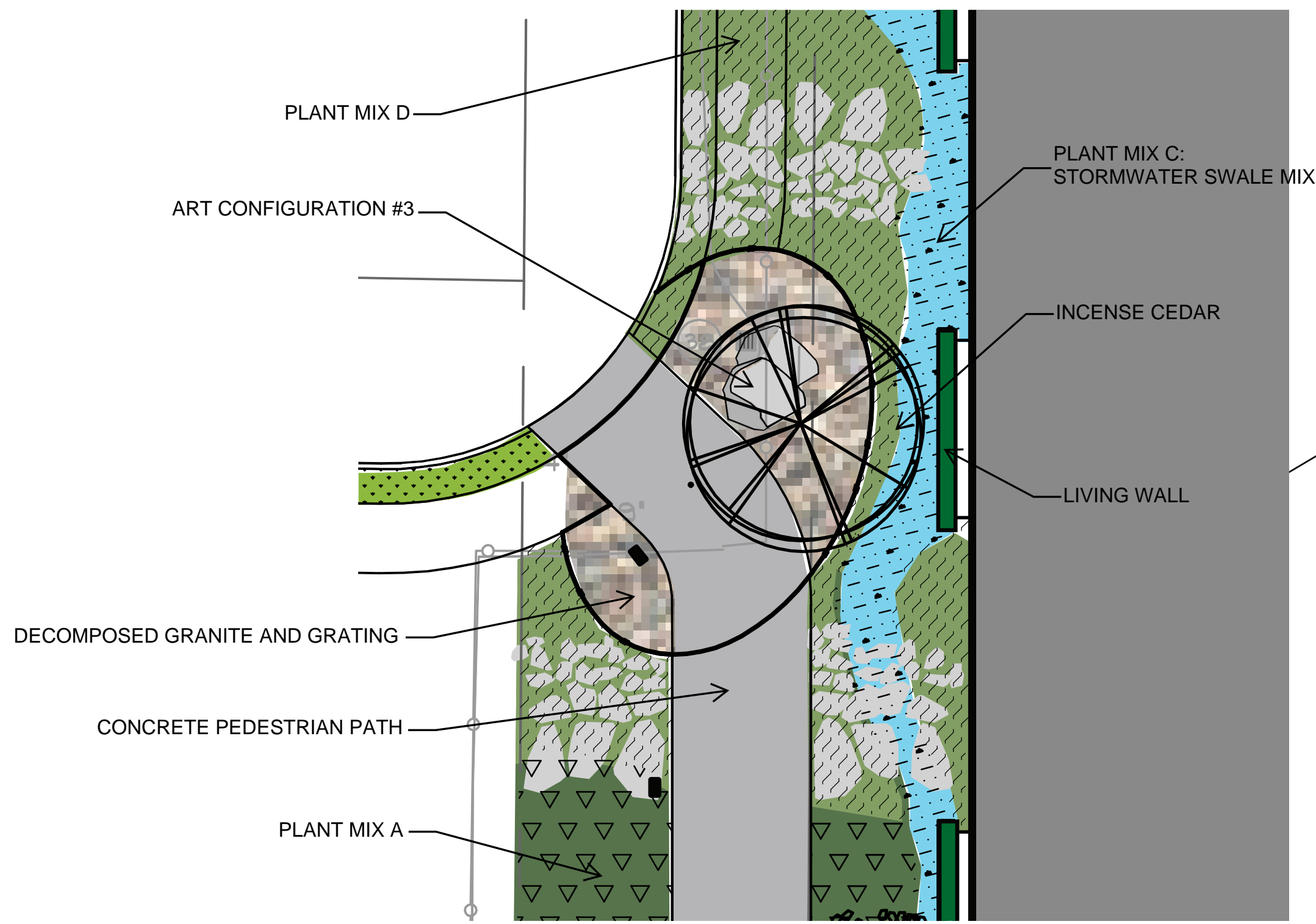


LANDSCAPE SCREENING





SE SHERMAN ST



ENLARGED ART NODES

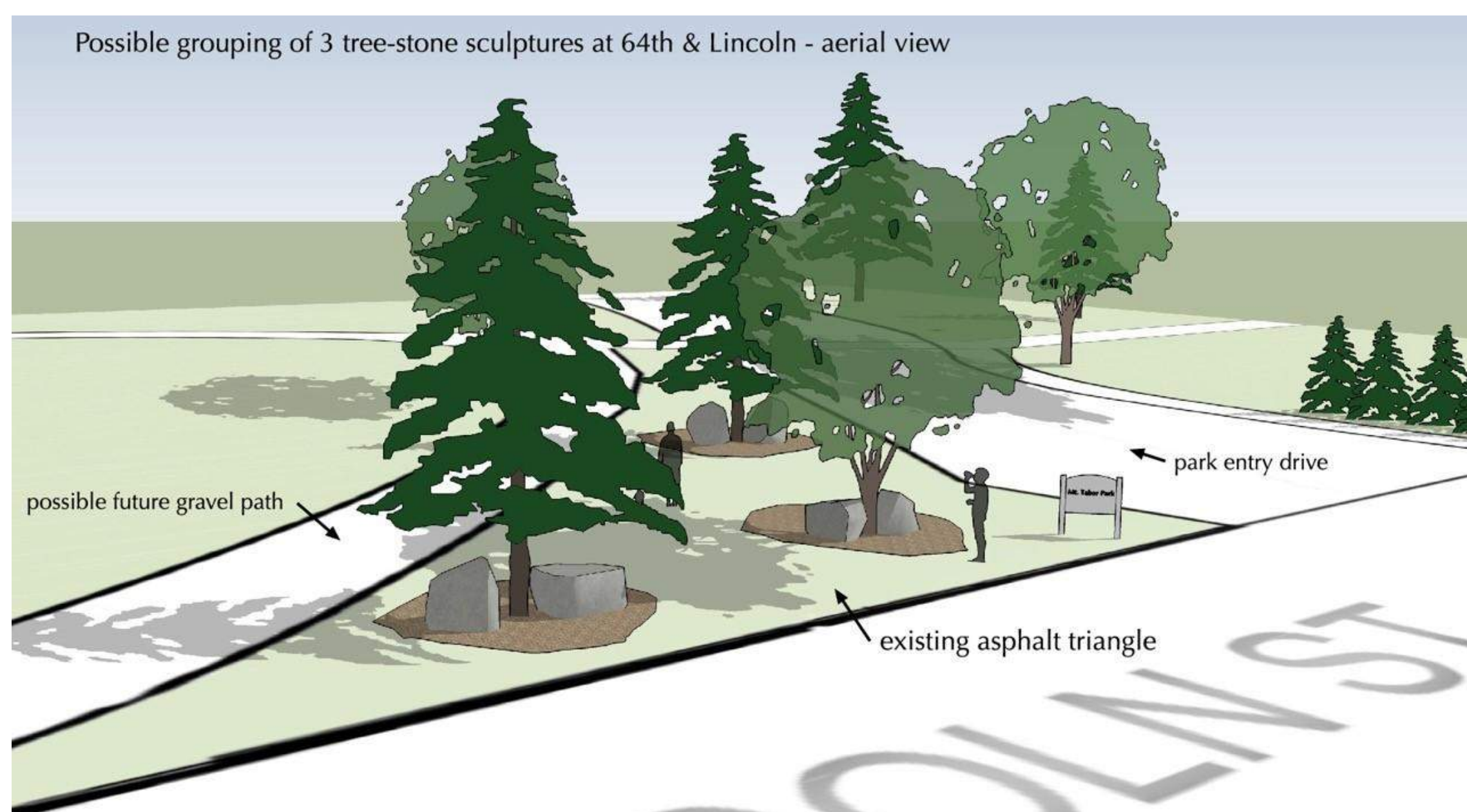
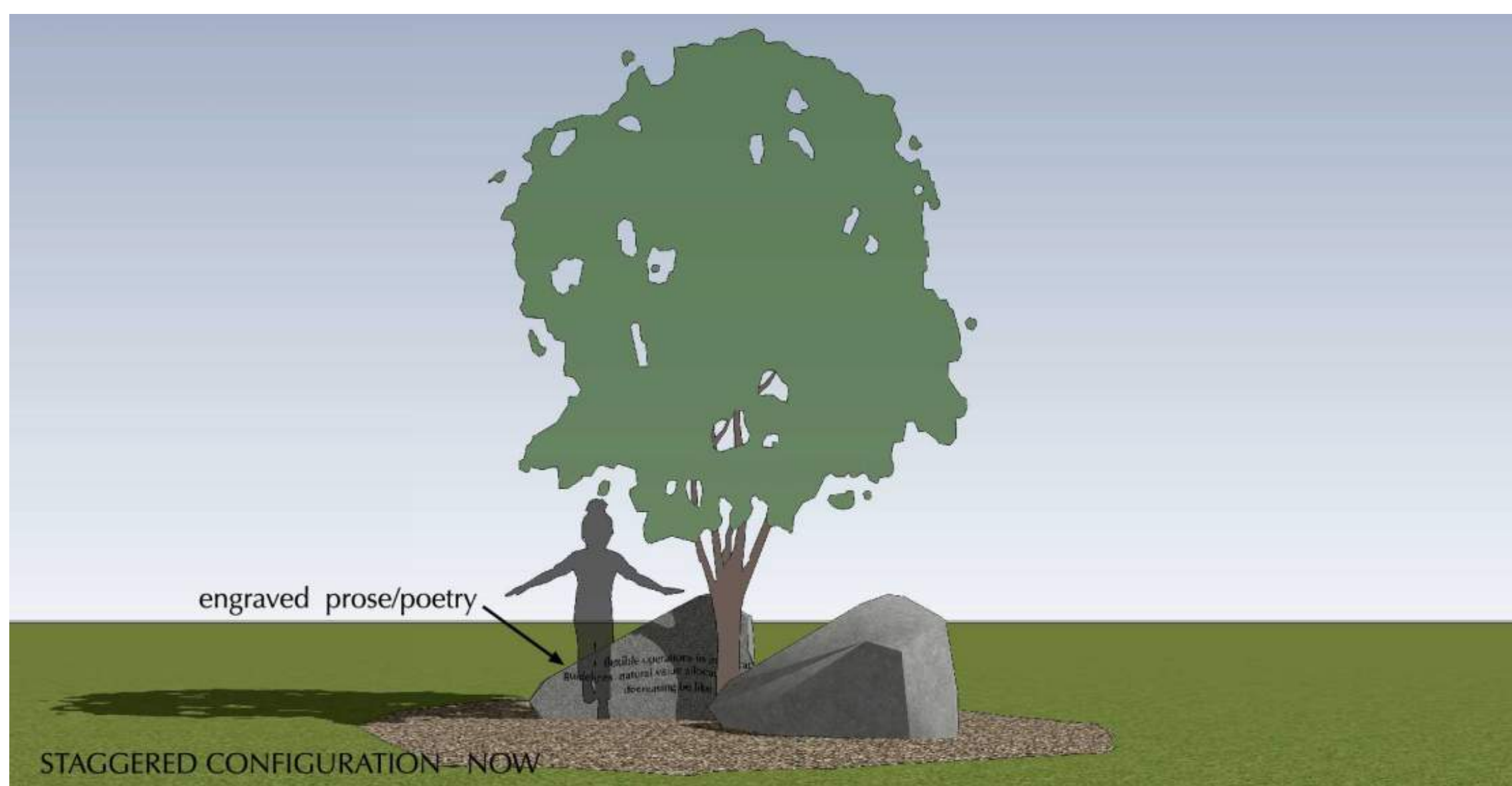
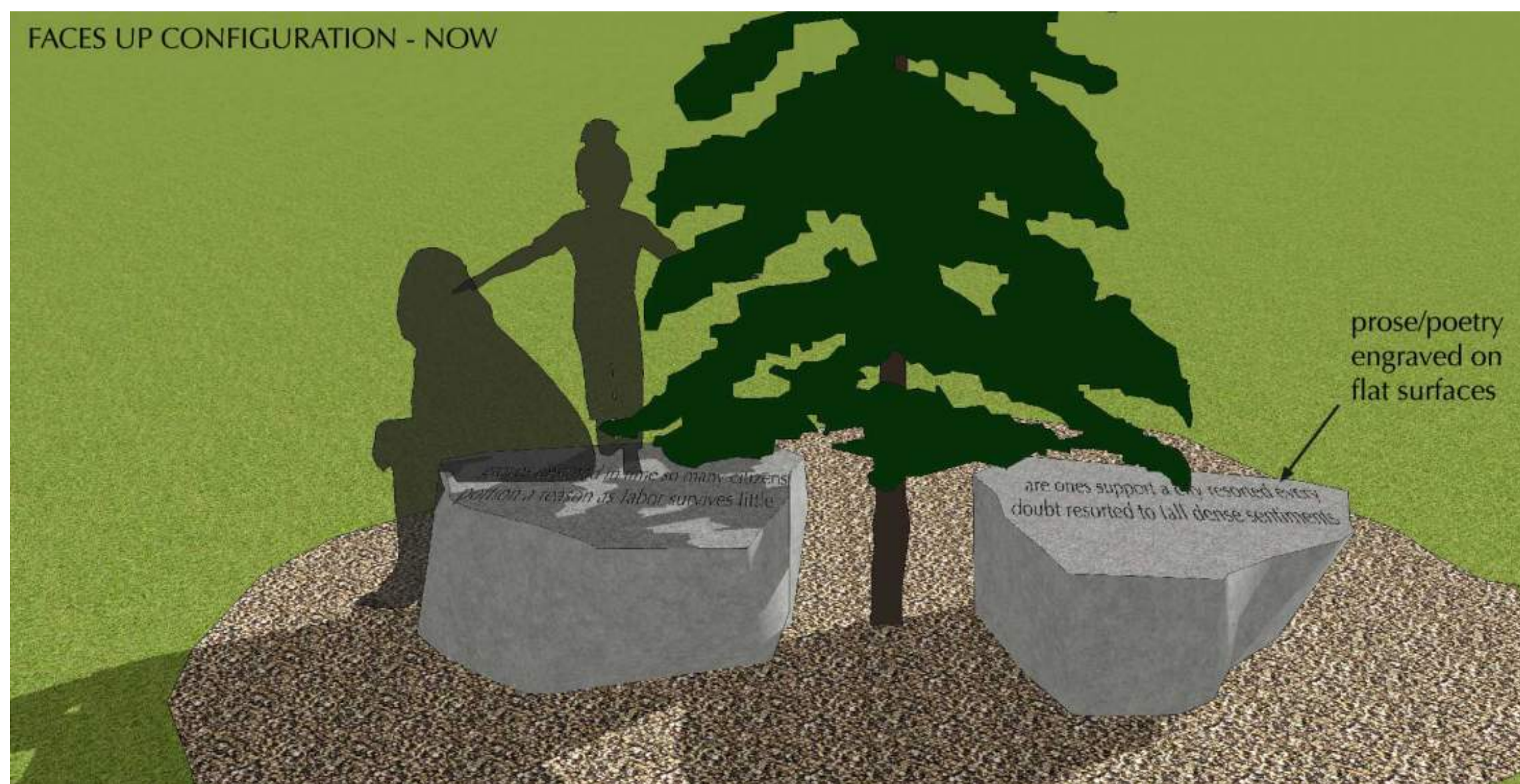
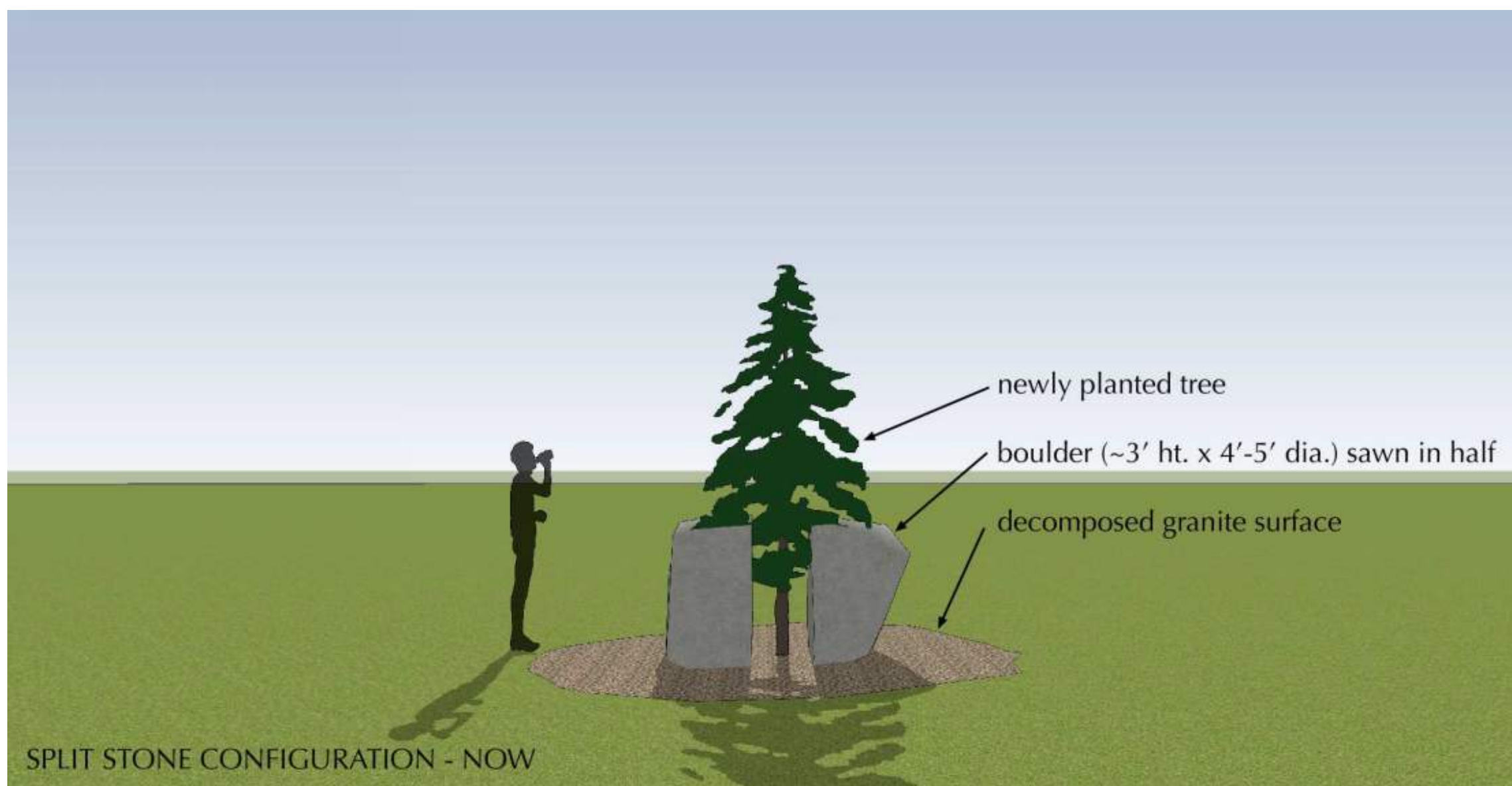


SE DIVISION ST





EXAMPLES OF TREE-STONE SCULPTURES



Possible grouping of 3 tree-stone sculptures at 64th & Lincoln



## MT. TABOR MASTER PLAN - HISTORY

**2000**

Mt Tabor Park Master Plan completed, but it did not include the Yard, Nursery, or the Long Block in its scope.

**2006**

Potential sale of Yard to Warner Pacific College led to mediation process with PP&R and Mt Tabor / South Tabor neighborhoods.

Result: no land sale and funding for an update to the Mt Tabor Master Plan to include the Yard, Nursery, and Long Block.

**2008**

Mt Tabor Master Plan Update completed after year-long public process and approved by City Council. Opsis Architecture designed the plan with much effort, dedication, and input from the community especially the Planning Group.

**2013**

Community garden installed in the Long Block, following the Master Plan.

**2014**

Due to budget reductions, tree nursery removed from the Long Block, and this area was seeded with grass.

**Nov  
2014**

Parks Replacement Bond passed, giving funding for one phase of the Master Plan for the Yard to improve worker safety.

**2015 –  
Present**

Opsis Architecture selected for design work, original planning group reconvened, design process underway.

# PROJECT SCHEDULE

	2017				2018												2019				2020															
	Nov		Dec		Jan		Feb		Mar		Apr		May		Jun		Jul		Aug		Sep		Oct	Nov	Dec	Q1	Q2	Q3	Q4	Q1	Q2	Q3	Q4			
	1	2	3	4	1	2	3	4	1	2	3	4	1	2	3	4	1	2	3	4	1	2	3	4	1	2	3	4								
<b>Architectural Design Process</b>																																				
Mt Tabor Maintenance Yard																																				
Task 1: Work Plan / Investigation / Master Plan																																				
Task 2: Schematic Design																																				
Task 3: Design Development																																				
Owner Review																																				
QAQC / Owner Review																																				
Task 4: Construction Documents																																				
Constructability Review																																				
Task 5: Permitting																																				
Task 6: Bidding																																				
Task 7: CA / Close-out																																				
<b>Historic Design Review</b>																																				
Land Use Review																																				